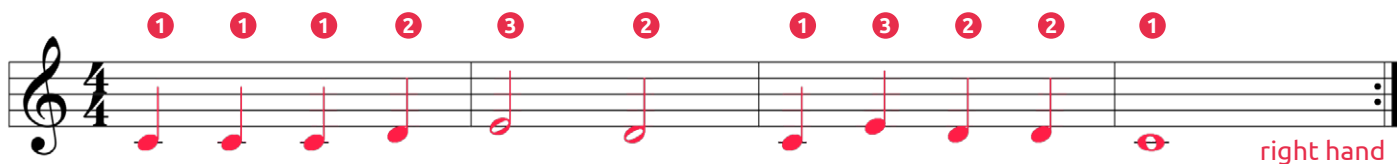
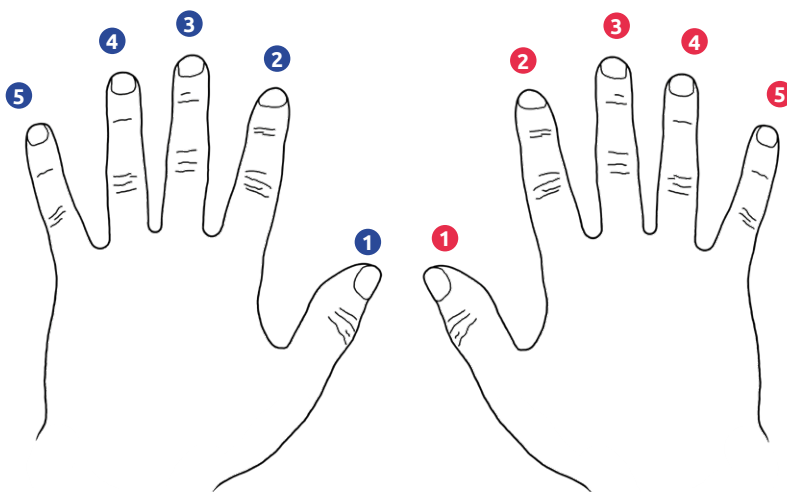
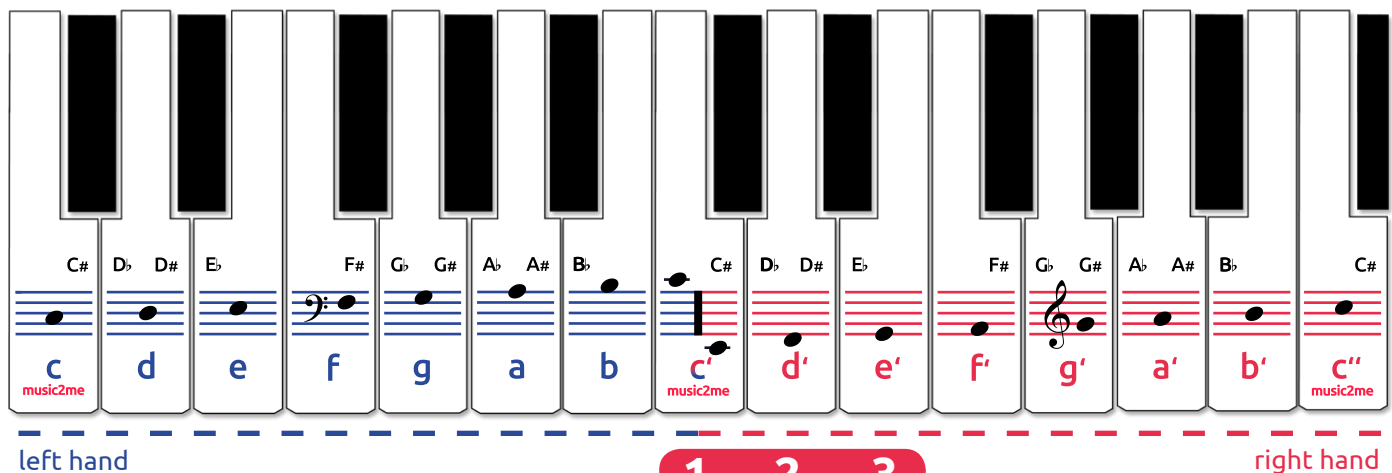


Au claire de la lune

notes

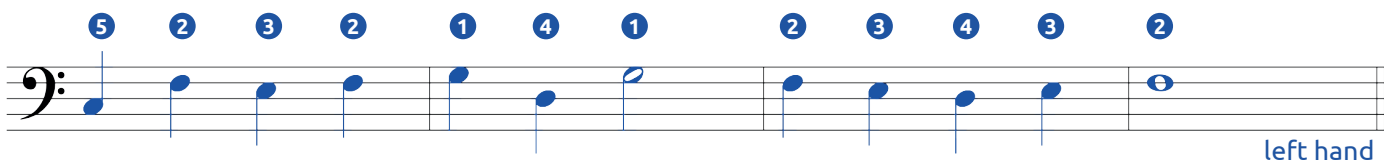
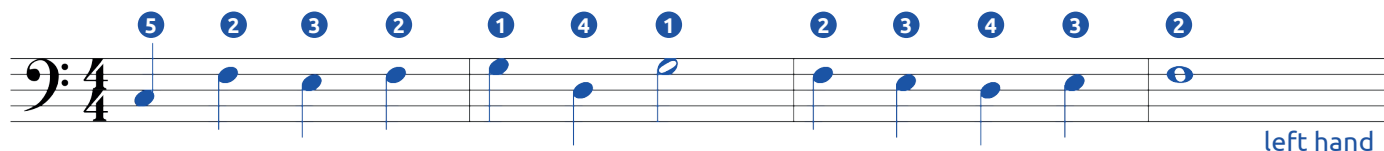


fingering

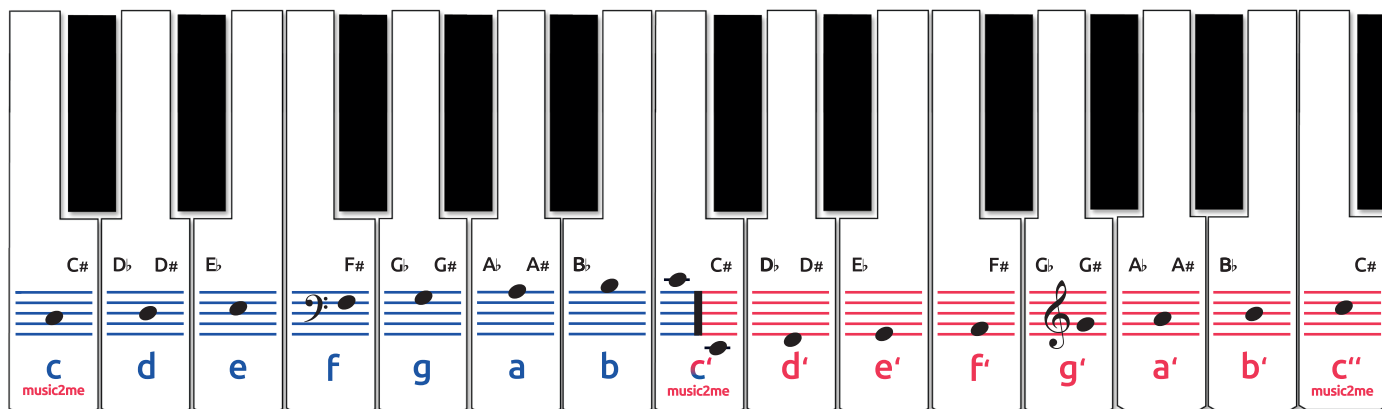


Aura Lee

notes



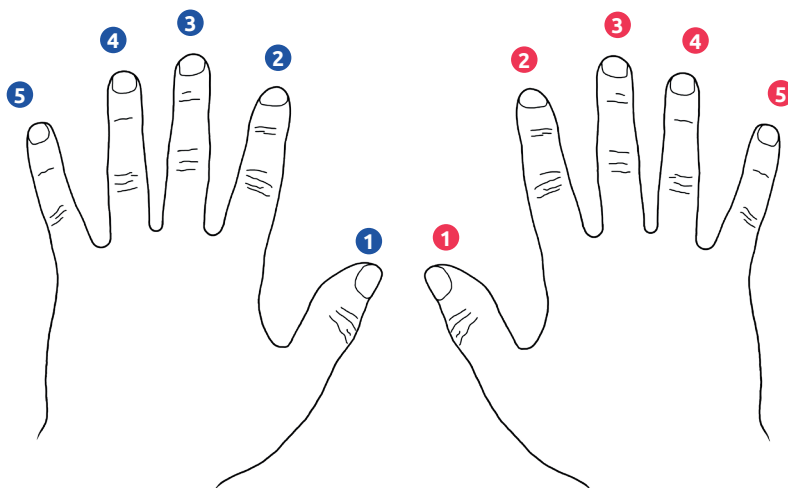
fingering



5 4 3 2 1

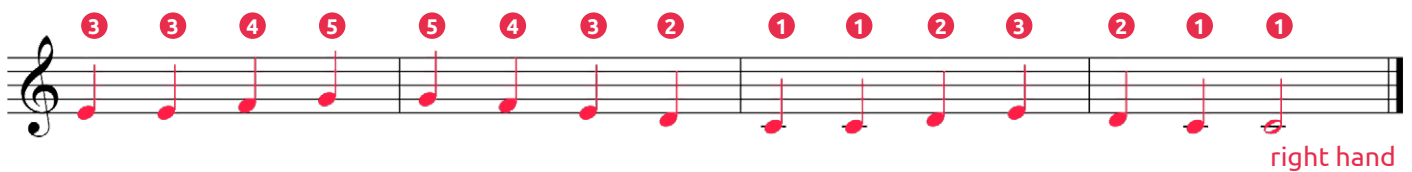
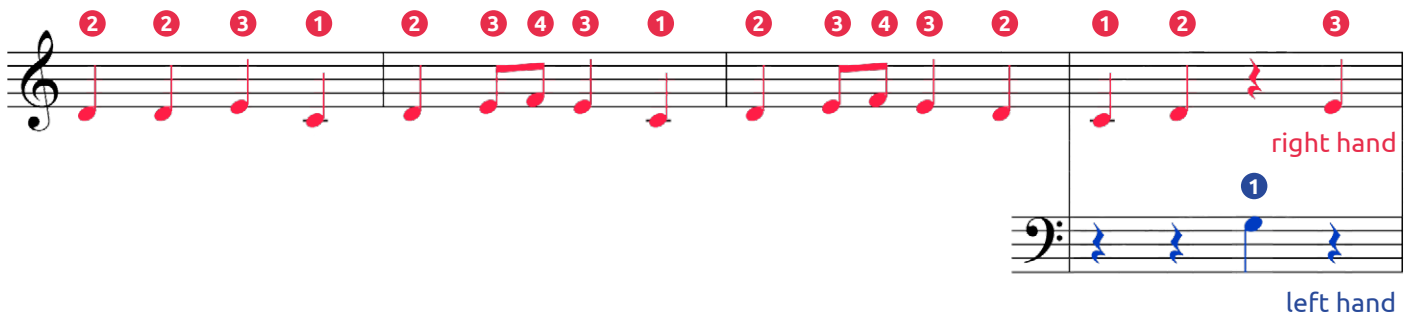
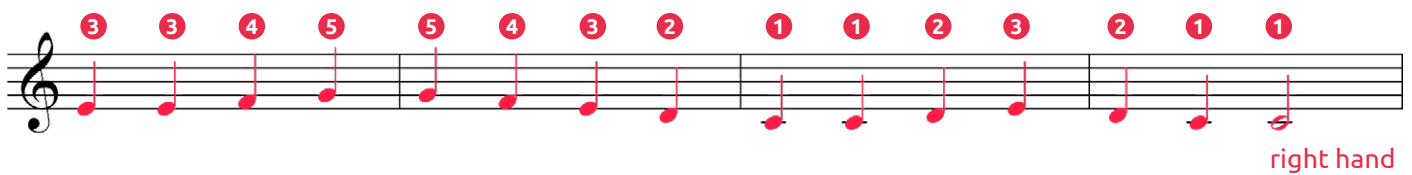
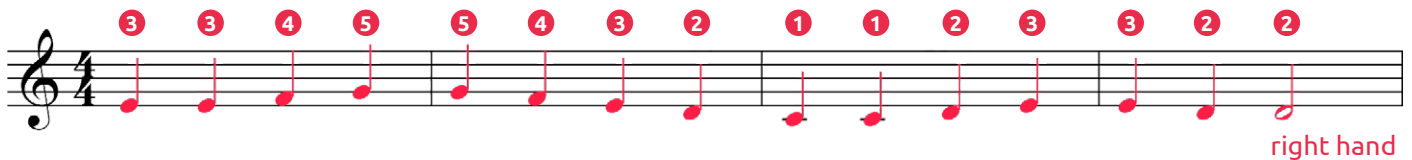
left hand

right hand



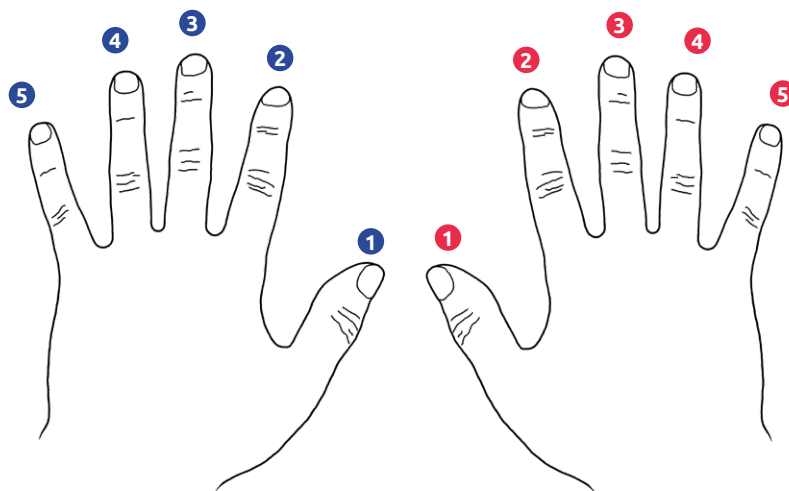
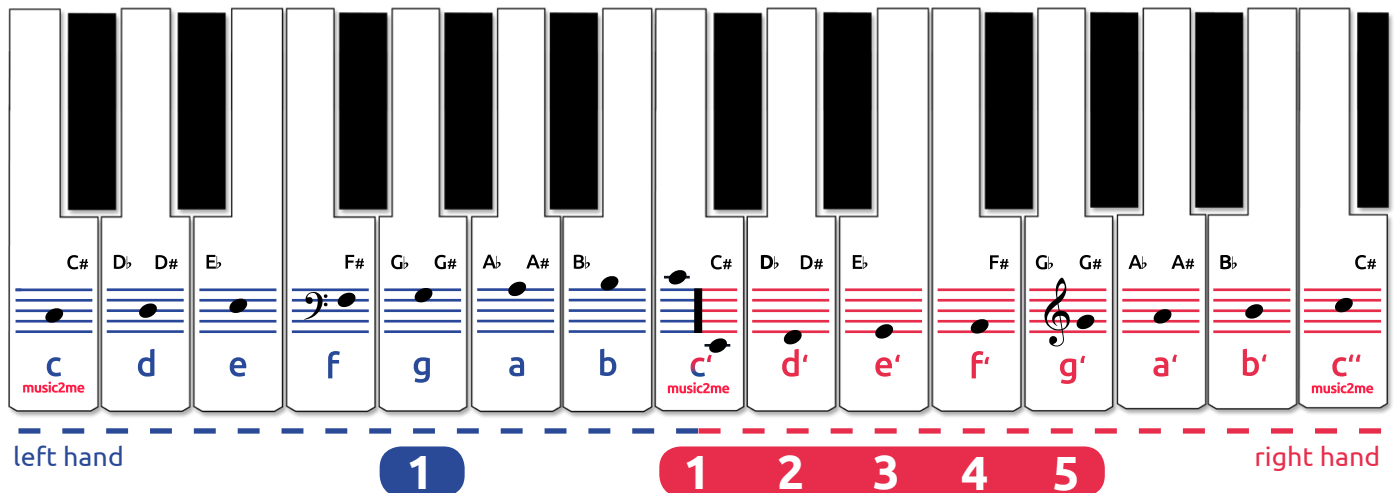
Ode to joy

notes



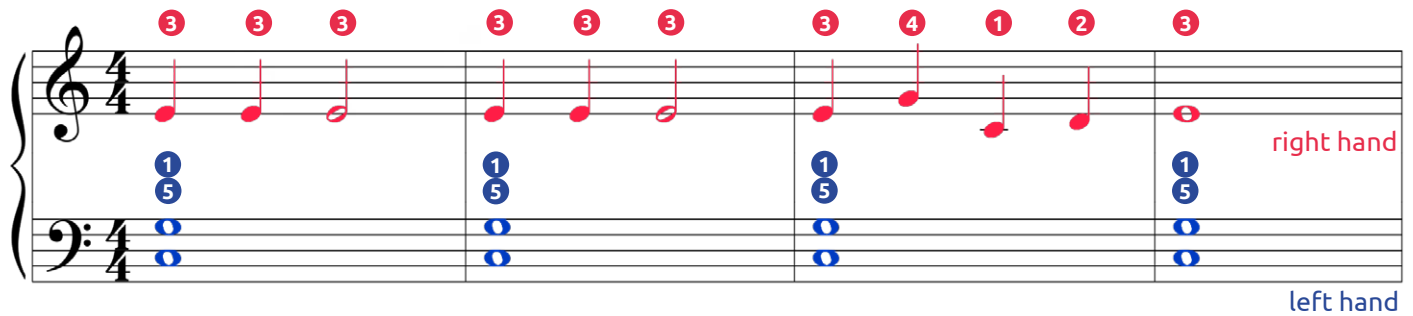
Ode to joy

fingering

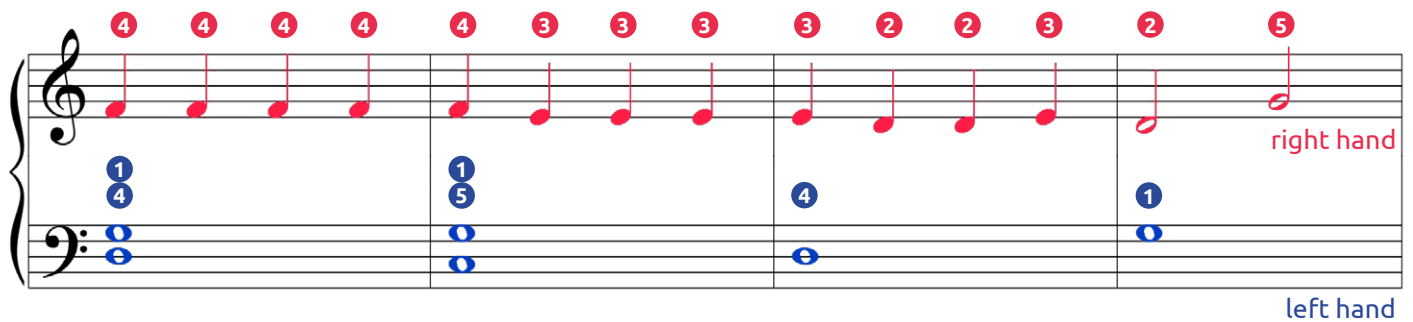


Jingle Bells

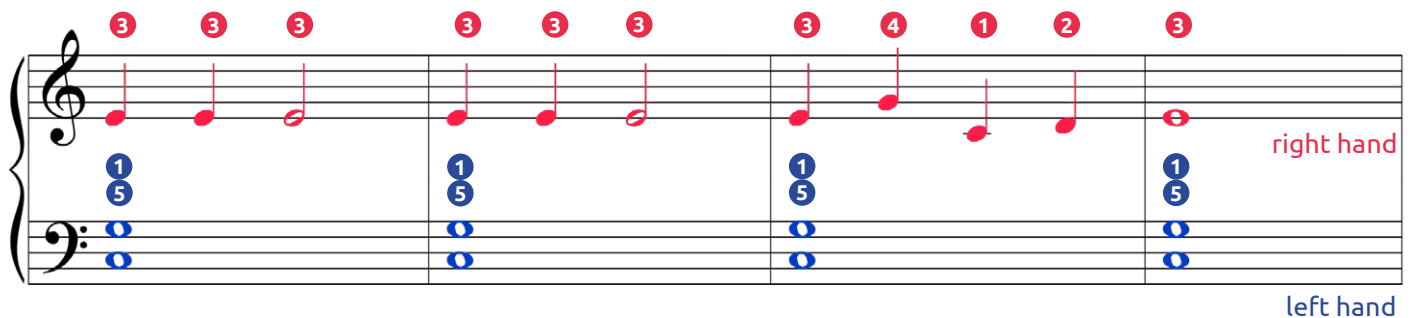
notes



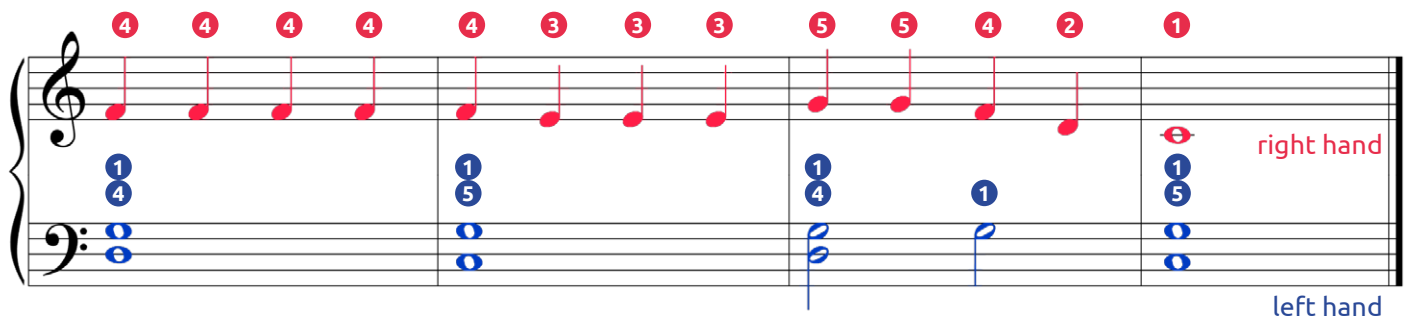
First system of the piano score for 'Jingle Bells'. The right hand (treble clef) plays a melody of eighth notes: G4, A4, B4, A4, G4, F#4, E4, D4, C4. The left hand (bass clef) plays a bass line of eighth notes: C3, D3, E3, F3, G3, A3, B3, C4. Fingering numbers are provided above each note.



Second system of the piano score. The right hand continues the melody: D4, C4, B3, A3, G3, F#3, E3, D3, C3. The left hand continues the bass line: D3, E3, F3, G3, A3, B3, C4. Fingering numbers are provided above each note.



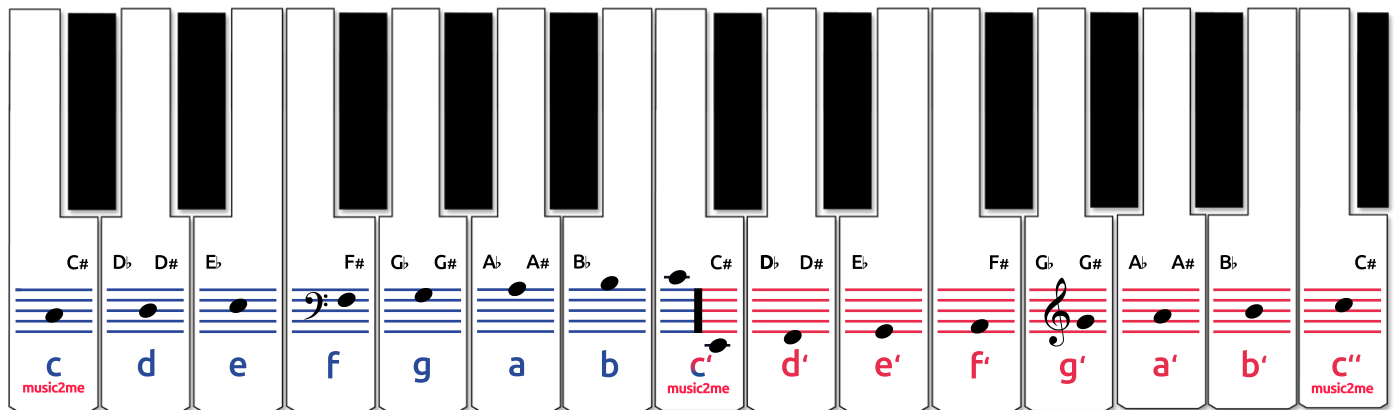
Third system of the piano score. The right hand continues the melody: G4, A4, B4, A4, G4, F#4, E4, D4, C4. The left hand continues the bass line: C3, D3, E3, F3, G3, A3, B3, C4. Fingering numbers are provided above each note.



Fourth system of the piano score. The right hand continues the melody: D4, C4, B3, A3, G3, F#3, E3, D3, C3. The left hand continues the bass line: D3, E3, F3, G3, A3, B3, C4. Fingering numbers are provided above each note.

Jingle Bells

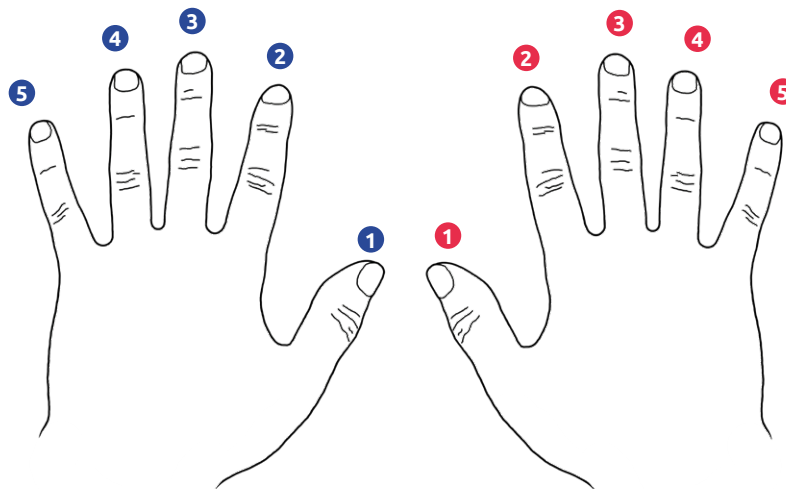
fingering



5 4 3 2 1
left hand

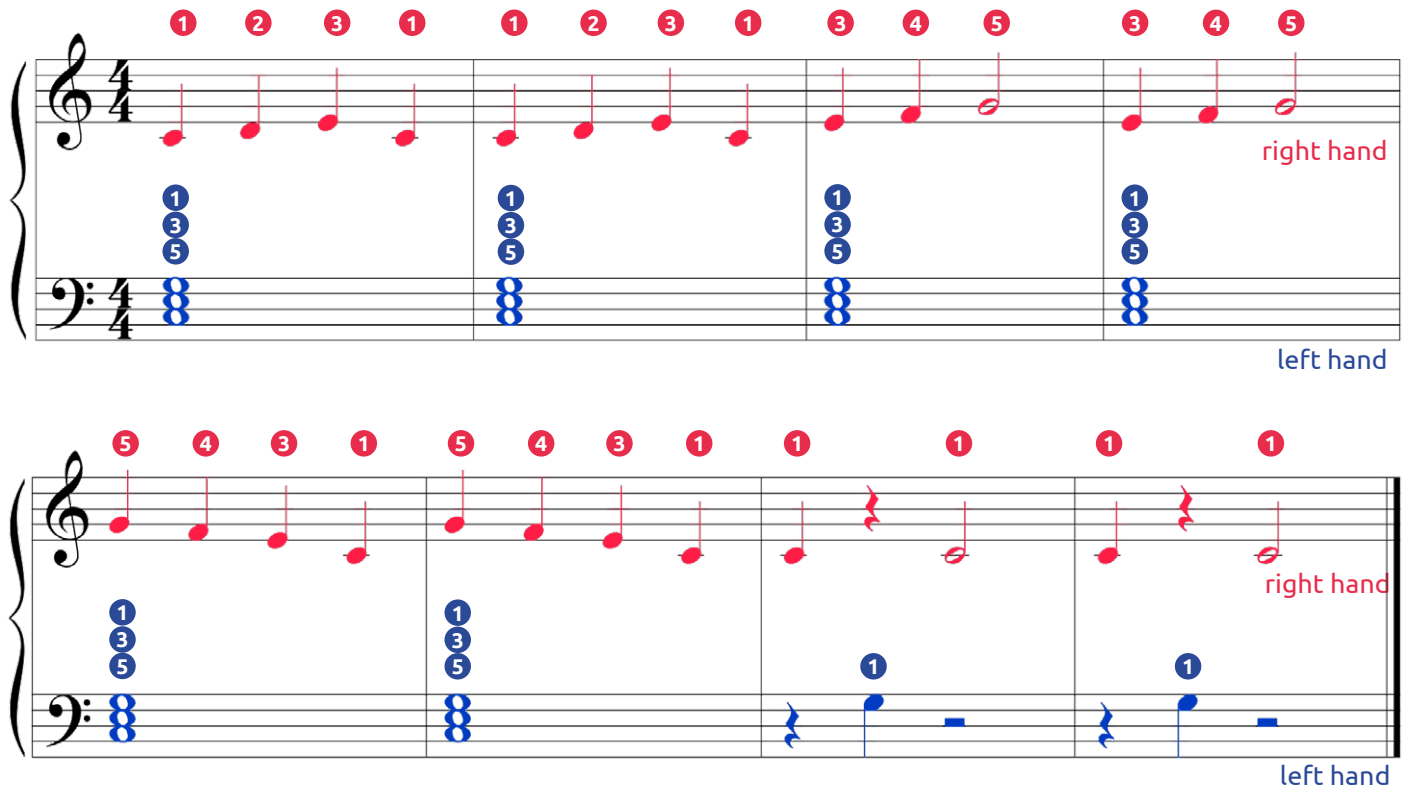
1 2 3 4 5

right hand



Brother John

notes



The image displays a piano score for the song "Brother John". It consists of two systems of music, each with four measures. The right hand (RH) plays a melody in 4/4 time, while the left hand (LH) provides a simple accompaniment. Fingerings are indicated by numbers 1-5 in red for the right hand and blue for the left hand.

System 1:

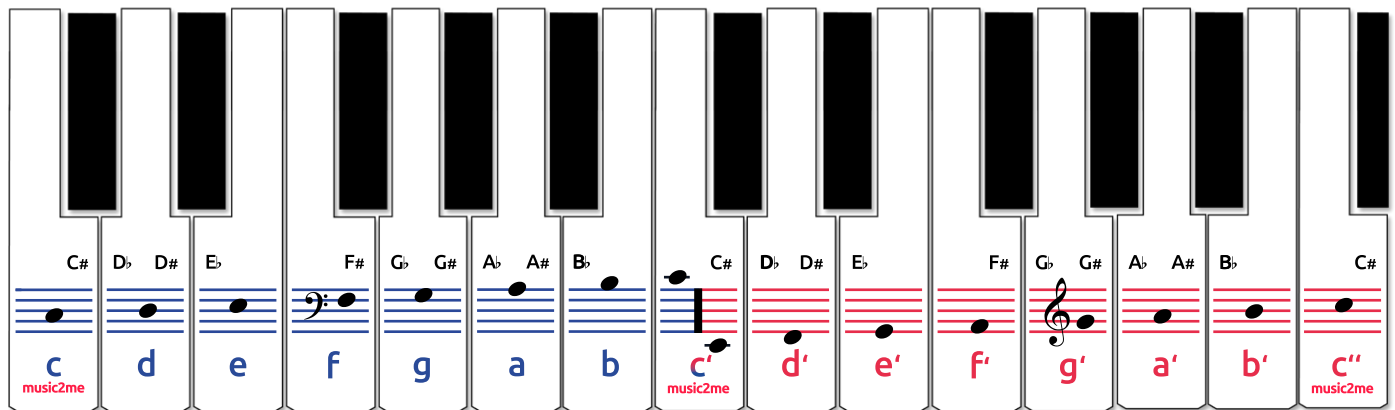
- Measure 1: RH (1, 2, 3, 1), LH (1, 3, 5)
- Measure 2: RH (1, 2, 3, 1), LH (1, 3, 5)
- Measure 3: RH (3, 4, 5), LH (1, 3, 5)
- Measure 4: RH (3, 4, 5), LH (1, 3, 5)

System 2:

- Measure 1: RH (5, 4, 3, 1), LH (1, 3, 5)
- Measure 2: RH (5, 4, 3, 1), LH (1, 3, 5)
- Measure 3: RH (1, 1), LH (1)
- Measure 4: RH (1, 1), LH (1)

Brother John

fingering



5 4 3 2 1
left hand

1 2 3 4 5

right hand

